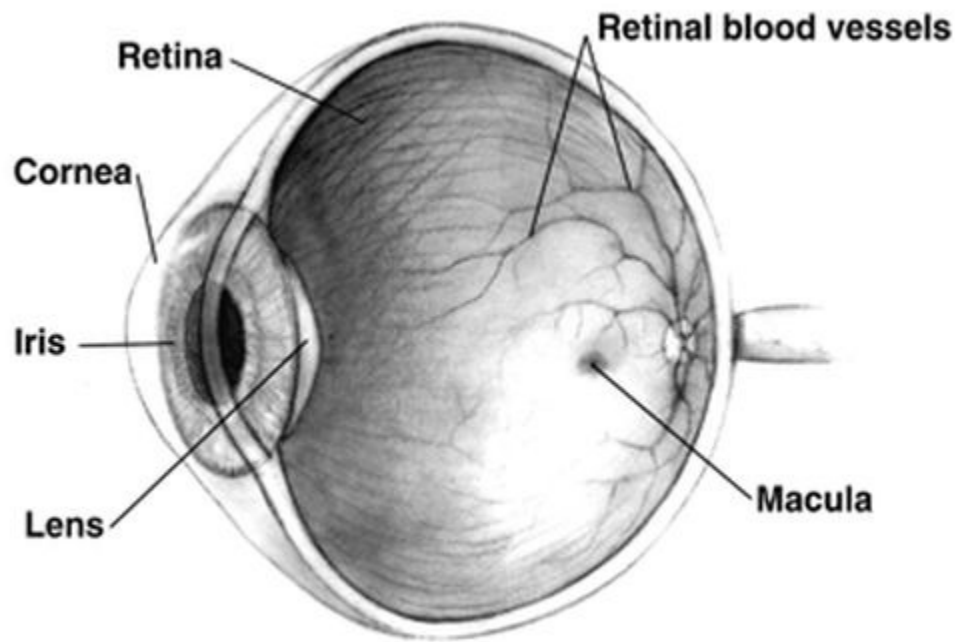


The Human Body - Your Vision

by ReadWorks



Take a look at your neighbor's eyes. The first thing you'll probably notice is the color of their eyes. Most people have brown, blue, or green eyes. Some people may have hazel, gray, or violet eyes. The colored part of the eye is called the **iris**.

Next you'll notice the **pupil**. The pupil is the black circle in the center of the iris. The pupil controls the amount of light that enters the eye. If you're in a very bright room, you'll notice that your neighbor's pupils are very small. This allows only a little bit of light to enter. If you are in a dark space, your neighbor's pupils will be much larger. This allows more light to enter the eye.

The eye is actually shaped like a ball. Eyes sit in a socket in the skull. When light enters the pupil, it hits the back of the eye, called the **retina**. The retina sends a visual message to the brain. When the brain gets the message, vision occurs.

The eyes and vision are very important. The body does many things to protect the eyes. The eyelid prevents things from entering the eyes. Tears wash dust and dirt out of the eyes. Eyebrows keep sweat from your forehead from entering the eye. We use our eyes a lot and it is important to take care of them!

Name: _____ Date: _____

1. The author wrote this passage to

- A. inform the reader about eyes and vision.
- B. caution the reader against putting things into the eye.
- C. convince the reader to get glasses.
- D. teach the reader about problems with the eye.

2. In this passage, the iris is

- A. a type of flower.
- B. the black circle in the middle of the eye.
- C. the colored part of the eye.
- D. a mirror.

3. The pupil

- A. is the colored part of the eye.
- B. is bigger when you are in a bright area.
- C. is bigger when you are in a dark area.
- D. is smaller when you are in a dark area.

4. Before the retina detects light,

- A. the retina sends a message to the brain.
- B. the iris sends a message to the brain.
- C. light enters the pupil.
- D. light enters the retina.

5. Tears help protect the eye by

- A. washing out dirt and dust
- B. washing the eye socket
- C. washing the sweat from the forehead
- D. washing the eyelid

6. The author begins the passage by asking the reader to look into someone's eyes.

Why does the author begin the passage this way?

7. Why does the pupil grow larger or smaller depending on how much light there is?
8. The question below is an incomplete sentence. Choose the word that best completes the sentence.

We use our eyes a lot _____ it is important to take good care of them.

- A. while
- B. so
- C. for
- D. of